



Homophobia in Schools and Society



LEARNING OUTCOMES

Knowledge, Skills & Actions

To reflect on the extent homophobia exists in schools

To understand what constitutes homophobic language and homophobic bullying

To empathise with how difficult it can be for young people to deal with/ live with homophobia in modern day society



Why do people bully others?



[Powtoons video on why people bully](#)



3 Minutes

New Vocabulary

Homophobia, transphobia, xenophobia, verbal abuse, physical abuse, cyber abuse



STARTER ACTIVITY

Does bullying exist at your school?
How does your school deal with bullying?
Are there different types of bullying that exist?
Do girls suffer more bullying than boys?



Homophobia in society



ASSESSMENT FOR LEARNING

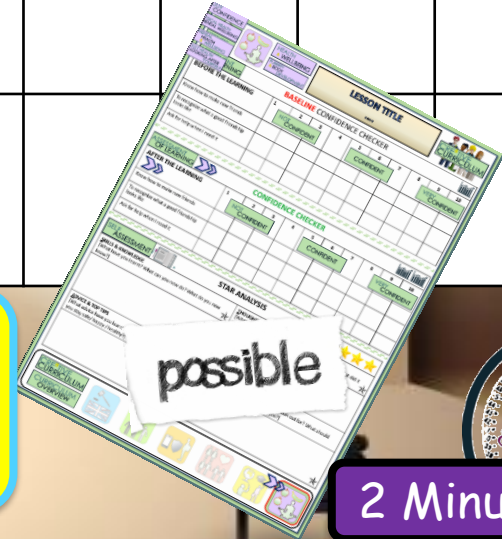
BASELINE CONFIDENCE CHECKER



BEFORE THE LEARNING	1	2	3	4	5	6	7	8	9	10
	NOT CONFIDENT				CONFIDENT				VERY CONFIDENT	
I can define homophobia										
I understand a range of forms homophobia takes										
I understand why its wrong to use homophobic language										



Complete a baseline assessment of where you think you are at for this lesson
(Discussion or complete sheet)



2 Minutes



	I'm not confident at all		I'm getting more confidence		Confident		Very confident		Super confident
--	--------------------------	--	-----------------------------	--	-----------	--	----------------	--	-----------------

LGBT+ FOCUS: WHAT IS HOMOPHOBIA?



TASK OR CHALLENGE

TASK

Link some of the words you can read to homophobia

CHALLENGE

Come up with five more words that you think could be included in this image – Linking them to homophobia

SORTING ACTIVITY

Match the key word with its correct meaning

BIPHOBIA

The fear or dislike of someone based on the fact they are trans, including the denial/refusal to accept their gender identity.

A

HOMOPHOBIA

the fear or dislike of someone, based on prejudice or negative attitudes, beliefs or views about lesbian, gay or bi people

B

TRANSPHOBIA

dislike of or prejudice against people from other countries.

C

XENOPHOBIA

Aversion toward bisexuality and toward bisexual people as a social group or as individuals. It can take the form of denial that bisexuality is a genuine sexual orientation, or of negative stereotypes about people who are bisexual

D



TASK OR CHALLENGE

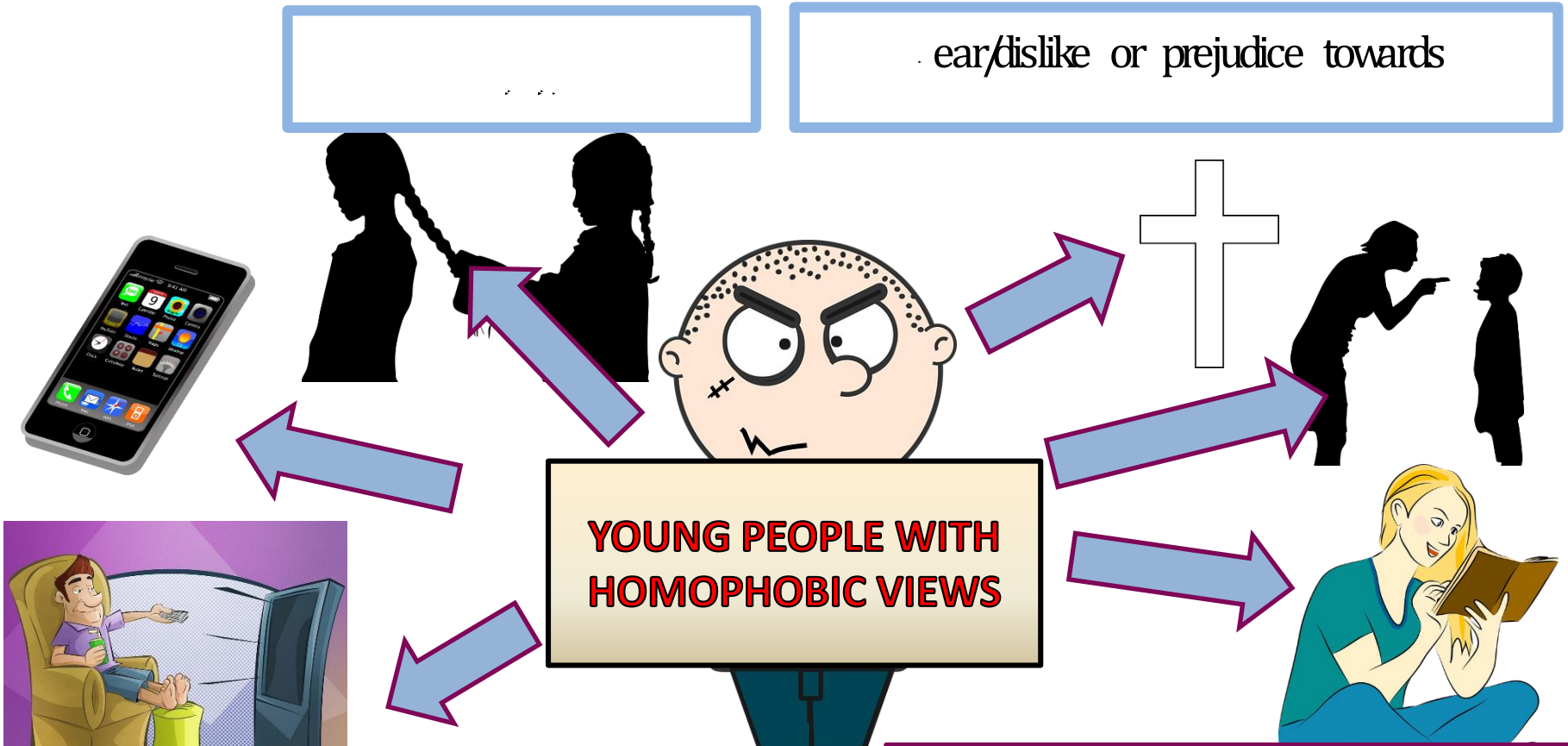
TASK

Match them up – which are new words to you?

CHALLENGE

After matching them up decide which are the most prevalent in UK society?

WHERE DO YOUNG PEOPLE GET THEIR ATTITUDES TOWARDS THE LGBT COMMUNITY FROM?



... fear/dislike or prejudice towards

**YOUNG PEOPLE WITH
HOMOPHOBIC VIEWS**

TASK OR
CHALLENGE

TASK

What do the pictures represent?

CHALLENGE

Where else might young people get their views from?

Who or what has the most influence on young people views?

IMPACT HOMOPHOBIA HAS ON STUDENTS – According to a study 10 years previously

Stats on
Homophobia –
Really
Relevant song



66%

of LGBTQA+ students
experience homophobia
in School

90%

of students regardless of
their gender or sexuality
experience name calling in
school

70%

of students who experience
homophobic bullying say
that it impacts their
academic work and
achievement in school

**‘That’s so gay!’ and
‘you’re so gay!’**
are the most common
homophobic phrases used
in school

50%

of students who experience
homophobic bullying have
truanted school at some
point to avoid it

98%

of LGBTQA+ students have
overheard at some point
the phrases ‘That’s so gay!’
or ‘You’re so Gay!’

TASK OR
CHALLENGE

TASK

What is shocking about these statistics?

CHALLENGE

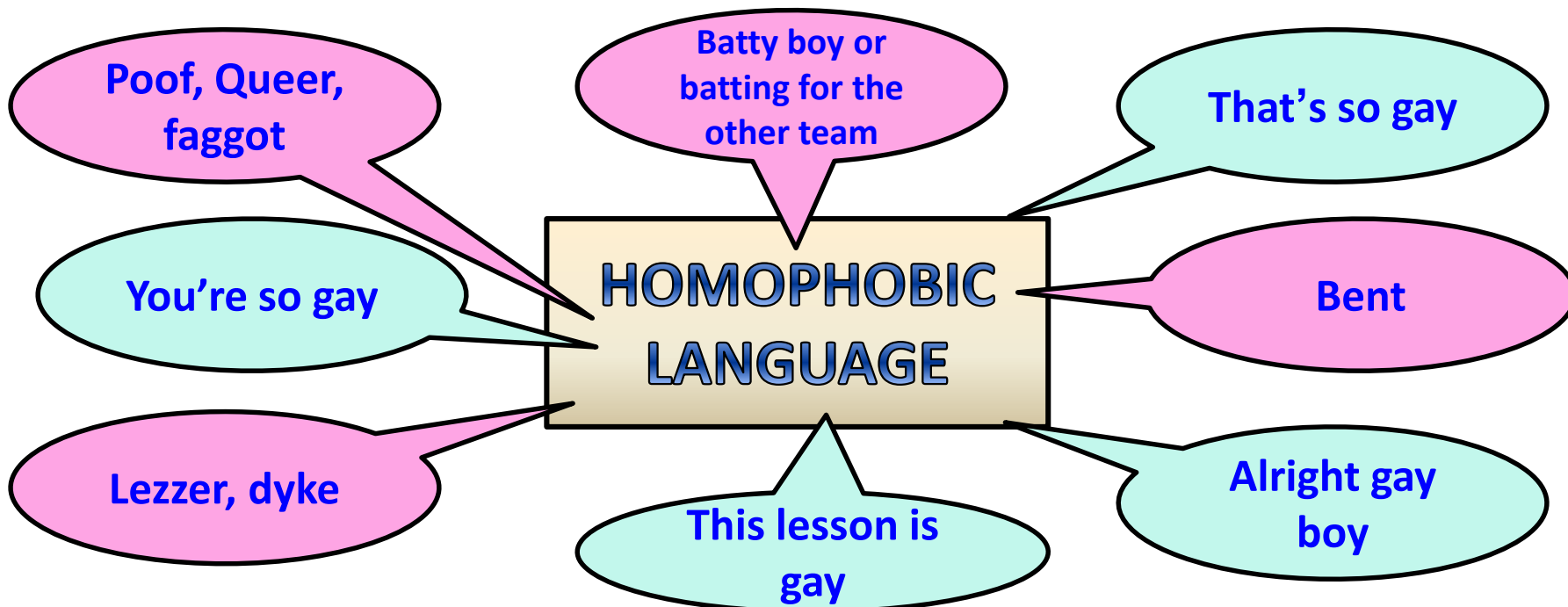
Do you think in 2019 these statistics will have changed much? Explain your answer

WHAT IS HOMOPHOBIC LANGUAGE?

Words spoken by
Victims of
homophobic bullying



Homophobic language is derogatory language that is often aimed towards perceived lesbian, gay and bisexual people, or those thought to be LGBTQA+. In addition, homophobic language is also often used to refer to something or someone as inferior. Phrases such as 'you're such a lemon!' or 'those socks are super gay!', for example, may be used to insult someone or something, but without referring to actual or perceived sexual orientation.



The language above **is NOT acceptable** and cannot be dismissed as harmless "banter" **EVEN IF THIS IS NOT YOUR INTENTION!** Be very careful about the language that you use as it can be very hurtful and incredibly upsetting for others to hear you liken the term gay to something that is wrong or inferior

WHAT IS HOMOPHOBIC BULLYING?

Homophobic bullying can be hard to identify because it may be going on in secret. Sometimes the victim may not want to tell anyone about it in case this makes them appear as if they are gay (regardless as to whether they are or not).

A recent study shows that 60% of gay pupils never tell anyone about the homophobic abuse they suffer in schools

Homophobic bullying can often look a lot like other forms of abuse and bullying

VERBAL ABUSE

PHYSICAL ABUSE

CYBER BULLYING

TASK OR
CHALLENGE

TASK

Give examples of what could be included in each category

CHALLENGE

Try to be specific with your examples and explain how they link with homophobic bullying

TYPES OF HOMOPHOBIC BULLYING?

VERBAL ABUSE

- Spreading rumours that someone is gay
- Suggesting that something or someone is inferior
- Calling someone “gay” for example, “you’re such a gay boy!”
- Using homophobic language towards someone

PHYSICAL ABUSE

- Hitting someone because of their sexuality
- Punching someone because of their sexuality
- Kicking or spitting at someone because of their sexuality
- Sexual assault
- Threatening someone and making them feel scared

CYBER BULLYING

- Text messaging including video and picture messaging.
- Using chatrooms to abuse someone based on their sexuality
- Using Phone Apps like WhatsApp and Snapchat to send abusive messages
- Using Social Media like Instagram, Facebook and Twitter to send abusive messages
- Using online gaming forums to send abusive messages
- Using any online spaces to spread rumours about someone or exclude them or to say nasty things about them

TASK OR
CHALLENGE

TASK

Which type of homophobic abuse is most likely to occur to...

Teenagers / Young adults / Older adults

CHALLENGE

Why can it be hard for schools to tackle homophobic bullying?

What could be done to support schools in dealing with this?

WHO IS TARGETED THE MOST WITH HOMOPHOBIC COMMENTS

MOST TARGETED GROUP

Pupils who are thought to be lesbian, gay or bisexual

Boys for behaving / acting 'like girls'

What surprises you about this order?

Pupils who are openly lesbian, gay or bisexual

Boys who are really academic

Girls for behaving / acting 'like boys'

Boys who don't play sports

Do you notice any trends?

pupils whose parents are gay

Pupils who have gay friends or family

LEAST TARGETED OF THE 9 GROUPS

Girls who play sports

PICK A CHARACTER TO BE IN THIS ROLE PLAY DRAMA

JARED

A single 25 year old heterosexual man in the UK

DEVINE

A sixteen year old lesbian in the UK

OMAR

A black gay man in Uganda

ABDUL

A sixteen year old homosexual Muslim man in Iran

ALEC

A sixteen year old homosexual Christian in the UK

SOPHIE

A black transgendered female to male person in Nigeria

SARAH

A single 25 year old heterosexual woman in the UK

MOHAMED

A male to female transgendered person

BEA

A bisexual young woman in the UK

SARAH

A secret lesbian woman whose country has the death penalty for homosexuality

DAISY

A 75 Year old heterosexual woman living in the USA

JOHN

Secretly gay premiership football player

FEEL COMFORTABLE ABOUT YOURSELF AND YOUR IDENTITY POINTS

- You score **5 points** if you can easily do it
- You score **2 points** if you might be able to do it
- You score **0 Points** if it wouldn't be able to do it easily / You cant do it

Remember: You must be in role as your character and put yourself in their shoes. The aim is not to win the most points but to get an understanding of how people would feel

FEEL COMFORTABLE ABOUT YOURSELF AND YOUR IDENTITY POINTS

- You score **5 points** if you can easily do it
- You score **2 points** if you might be able to do it
- You score **0 Points** if it wouldn't be able to do it easily / You cant do it

Remember: You must be in role as your character and put yourself in their shoes. The aim is not to win the most points but to get an understanding of how people would feel

**ABLE TO KISS YOUR PARTNER SAFELY
IN PUBLIC**

**ABLE TO EXPRESS YOURSELF AND BE
WHO YOU WANT TO BE**

**BE OPEN ABOUT YOUR SEXUALITY
WITH YOUR FAMILY**

**HAVE YOUR RELIGION SUPPORT YOUR
RELATIONSHIP**

**FEEL SAFE WHEN WALKING THE
STREETS AT NIGHT**

ABLE TO GET MARRIED

**TRAVEL THE WORLD WITHOUT
PERSECUTION**

**REPORT ABUSE TO THE AUTHORITIES
IF YOU ARE A VICTIM OF IT**

ADOPT A CHILD

**KNOW OF POSITIVE ROLE MODELS YOU
CAN LOOK UP TO THAT ARE THE SAME AS
YOU**

HOW MANY FEEL COMFORTABLE POINTS DID EACH CHARACTER SCORE?

WHAT DO YOU NOTICE?

WHAT CAN WE LEARN FROM THIS? DO THE HETEROSEXUAL PEOPLE HAVE THE MOST COMFORTABLE POINTS?

JARED

A single 25
year old
heterosexual
man in the UK

DEVINE

A sixteen year
old lesbian
in the UK

OMAR

A Black gay
man in
Uganda

ABDUL

A sixteen year
old
homosexual
Muslim man
in Iran

ALEC

A sixteen year
old
homosexual
Christian in
the UK

SOPHIE

A black
transgendered
female to male
person in
Nigeria

SARAH

A single 25
year old
heterosexual
woman in the
UK

MOHAMED

A male to
female
transgendered
person

BEA

A bisexual
young woman
in the UK

SARAH

A secret lesbian
woman whose
country has the
death penalty
for
homosexuality

DAISY

A 75 Year old
heterosexual
woman living
in the USA

JOHN

Secretly gay
premiership
football player

“Being homophobic is as bad as being a racist”

Start with this card....

THOUGHTS & FEELINGS

Or these cards....

There is evidence that...	Surely...	I'm not convinced that...	I understand that, but...	I'm not sure I understand, please could...	So, are you saying that...	In my opinion...	I think...
Therefore..	Clearly...	Yes, but on the other hand...	Perhaps...	So, you think that...	Does this mean...	I disagree...	I would contest...
Consequently...	Obviously..	Something else to consider is..	I wonder if...	So if...does this mean that...	Why do you think that...	I partially agree...	Unlike...

STRONGLY DISAGREE

DISAGREE

AGREE

STRONGLY AGREE

Task 1: Discuss / Debate with your partner your own personal views towards this statement /idea

Extension: Can you think of specific examples of recent events that would support this statement and other specific examples that would go against this statement?



Discussion task



2-3 Minutes

LEARNING OUTCOMES



STOP!

Let us review our learning outcomes for this lesson
Knowledge, Skills & Actions

PAIR & SHARE

ASSESSMENT FOR LEARNING

Confidence Checker



AFTER THE LEARNING	1	2	3	4	5	6	7	8	9	10
	NOT CONFIDENT				CONFIDENT				VERY CONFIDENT	
I can define homophobia										
I understand a range of forms homophobia takes										
I understand why its wrong to use homophobic language										



Complete the confidence checker of where you think you are at for this lesson (Discussion or complete sheet)



3 Minutes

←

	I'm not confident at all		I'm getting more confidence		Confident		Very confident		Super confident
--	--------------------------	--	-----------------------------	--	-----------	--	----------------	--	-----------------



IMPORTANT
INFORMATION

SEEKING SUPPORT

Enjoy the lesson, Challenge
your perceptions and
understand how to seek
further advice and support



IMPORTANT
INFORMATION



FOR MORE INFORMATION ABOUT THE TOPICS COVERED IN THIS UNIT
WE WOULD ADVISE ONE OF THE BELOW:

SPEAK TO YOUR PARENTS/GUARDIANS OR HEAD OF YEAR,
TRUSTED ADULT OR FRIEND IF YOU HAVE ANY CONCERNS ABOUT
YOURSELF OR SOMEONE YOU KNOW - IT IS ALWAYS IMPORTANT TO TELL SOMEONE!



VISIT THE BROOKE WEBSITE <https://www.brook.org.uk/> FOR ADDITIONAL SUPPORT ON SEXUAL HEALTH
AND WELLBEING FOR UNDER 25s

SPECIFIC FURTHER INFORMATION ON THIS TOPIC CAN BE FOUND
HERE:

- VISIT lgbt.foundation (advice, support and information)
- CALL 0300 330 0630 (Switchboard.LGBT 10am - 10pm everyday)CALL
04879 568 256 (INFORM)
- <https://www.stonewall.org.uk>



CORE
THEME 2

2 Minutes

SIGNPOSTING
SUPPORT

HELP & SUPPORT
SERVICES

FURTHER
INFORMATION



REFLECTION PLENARY

I know if I need further support or help I could speak to.... or contact...

Before I could/would say and do ... but now I feel I am able to say

Before I only knew ... now I also know ...

I supported others by...

One thing I didn't realise was... now I know that...

The key words for this lesson are...

I always knew ... but now I can see how it connects to...

The most important thing I have learnt today is...

I'm really proud of the way I have...

I used to feel ... but I now feel ..

I would like to learn...

A question I would like to ask is...

Before I thought that ... but now I realise..

One assumption of mine that was challenged was...

Today I have tried to...

Next lesson I would like to..

Before I would have done... Now I will ...

Before I would have said ... but now I will say...

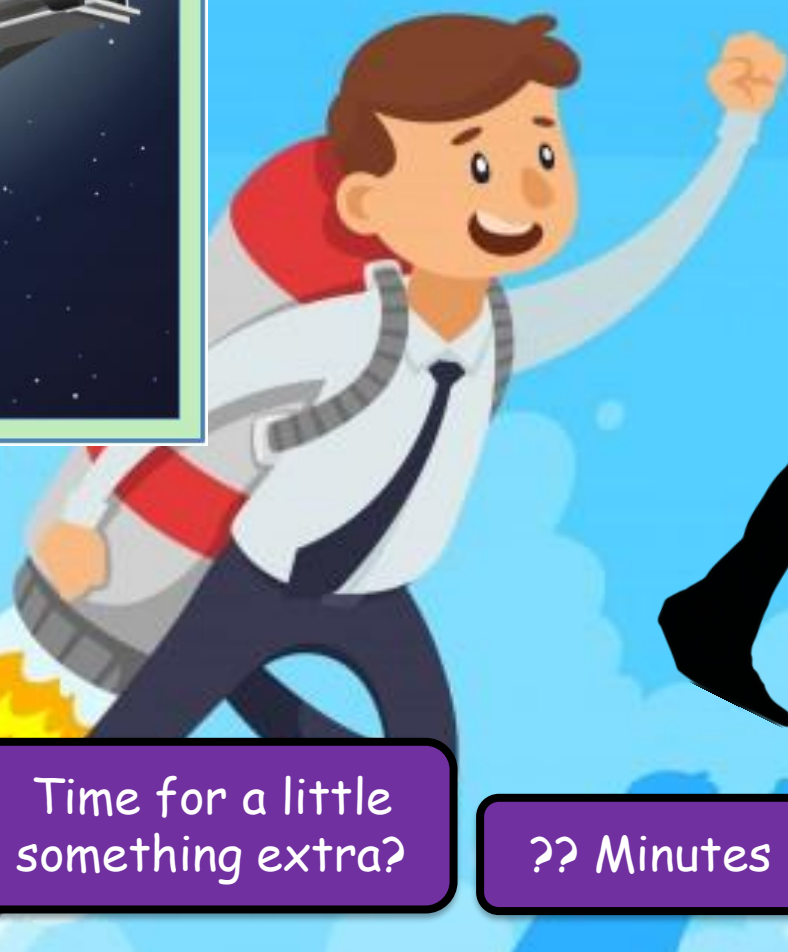
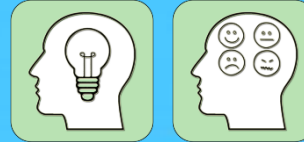
A problem I overcame today was...

2 Minutes



REFER TO MINDFULNESS

▶▶▶ POWERPOINT



Time for a little something extra?

?? Minutes

